

Current Matters

Committed to improving the quality of life of our members

August 2010
Vol. 2 Issue 8



Nobles Cooperative
Electric

® Your Touchstone Energy® Cooperative 

When the thunder rolls and lightning strikes

The thunder rolls and the lightning strikes more than 400 people each year. According to the National Oceanic and Atmospheric Administration, on average between 55 and 60 people are killed.

Remember lightning can strike as far away as 10 miles from an obvious storm area. Lightning can also cause problems with electrical systems in and outside of your home. Most of these can be avoided with a few simple precautions.

- Seek shelter during a thunderstorm. Stay off computers and corded phones. Unplug electronic equipment and appliances that aren't needed.

- Be sure to stay indoors until 30 minutes after the first roll of thunder.

- Stay away from windows and doors.

- Avoid high ground, open spaces, trees, small isolated sheds or other small structures in open areas.

- Stay away from tractors and other metal farm equipment.

- Avoid water. If you are in a boat, get to shore.

- Keep in mind water pipes conduct electricity too.

When severe weather hits, light-

ning and strong winds can often topple trees on power lines and cause interruptions. Your calls help us pinpoint the areas of destruction and dispatch our crews with the knowledge they need before departing.

Our crews work around the clock to restore power. Following an outage caused by a storm, members should immediately report a power outage or any power line hazards by calling Nobles Cooperative Electric (NCE) at 507-372-7331 or 507-836-6107. Always remember to stay away from downed power lines.

During extended outages avoid opening the refrigerator or freezer. Food will stay frozen in a fully loaded freezer for 36 to 48 hours, if the doors remain closed. If the freezers half full, the food will keep for 24 hours.

NCE knows that any kind of service interruption is an inconvenience to our members. That is why we proactively invest (\$122,188.20 in 2009) in maintaining trees and right-of-ways to ensure power is there when you need it.

Be safe and know what to do when the thunder rolls.

Energy saving tip

Use the moisture sensor feature on your clothes dryer if it has one. This option shuts down the dryer when clothes are dry. In addition, clean the lint filter after each load. This improves air circulation and increases the dryer's efficiency.

Source: U.S. Dept. of Energy

Mark your calendar

Sept. 1 Read your meter

Sept. 6 Labor Day

Offices will be closed. Crews will be on call for outages.

Sept. 10 Electric bills due

 WILDBLUE DELIVERS

RELIABILITY.
AFFORDABILITY.
AVAILABILITY.
HIGH-SPEED.
ALWAYS ON ACCESS.

Blue Saves Green.

Only \$99! Installation free! Call us today at 507-372-7331.

2

Manager's message

3

Electrical engineer begins at NCE

4

LeAnna Homandberg returns from Youth Tour



A word from your General Manager
by **Richard 'Rick' Burud**

Co-op Connections card

In early September, you'll be receiving a new, free Co-op Connections card in the mail. It'll give you discounts locally and nationally for being a Nobles Cooperative Electric member. See the column to the right for more details.

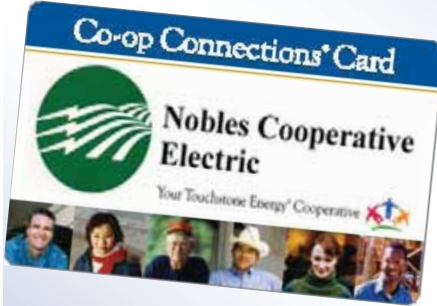
Outage improvements

Our new outage management system has helped us manage outages and determine their cause. The advent of the automatic meter reading system will take that to a whole new level.

Even though storms make outages extremely difficult, our outage management system has proven to be very effective in restoration and reporting. Yes, mother nature is still in control, but we'll strive to minimize outages to you, our members.

An informed member is always a better member. You can help us do our job more efficiently by reporting downed lines or items that aren't quite right, like trees that need our attention. All these preventive measures help us deliver more reliable power to you—a strategic goal at our cooperative.

Discover the value of cooperative membership!
As a member, you will benefit from
Co-op Connections!



We're introducing Co-op Connections, a new program that helps you receive discounts on products and services from participating local and national businesses.

Free to all members

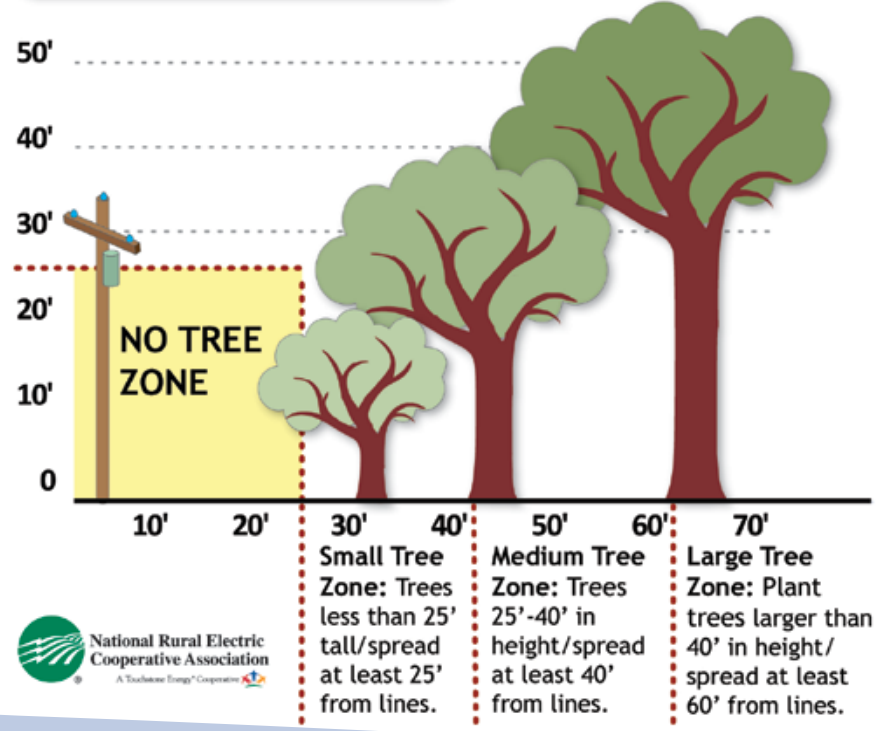
Each member of our cooperative receives the Co-op Connections card free. There's no signup. No

annual fees. You get your Co-op Connections card simply because you're a member of Nobles Cooperative Electric.

Watch the mail for your free Co-op Connections card in September!

You will receive your Co-op Connections card and two key fobs per household. Look for the Co-op Connections stickers in windows at local businesses. Show your Co-op Connections card and get valuable discounts from these participating businesses. Your card also entitles you to substantial pharmacy discounts nationwide. Just one more way you benefit from being a cooperative member!

Tree Planting Guide



Electrical engineer begins career at NCE

Chris Gallaway started as the cooperative's chief electrical engineer June 21. Gallaway worked for Patrick Energy Services in Lisle, Illinois, as an electrical design contractor for 4½ years. He did contract work for Commonwealth Edison, an electric utility serving northern Illinois and Chicago. "I was the link between planning and construction," Gallaway stated. "I planned the routes for the power lines, the type of poles and height, whether to use underground cable or overhead lines and secured permits."

Gallaway is excited about the added responsibilities at the cooperative. "This is a step up for me," he said. "Besides doing what I did at my previous job, I'll also do different studies on voltage, electrical load and work plans that analyze the cooperative's system and what upgrades are needed." Gallaway will also work for Federated Rural Electric Association in Jackson as their engineer. NCE has shared an engineer with other cooperatives since 1973.

Gallaway grew up in an unincorporated township near Peoria, Illinois. "Cornfields surrounded our school on three sides," he said. After high school he earned his bachelor's degree in electrical engineering from Southern Illinois University at Carbondale. Gallaway's wife, Meagan, and two-year-old daughter, Amber, moved to Minnesota on July 7. Chris is already a Minnesota Vikings fan due to his aunt's influence. He also enjoys using computers, tenting, golfing and do-it-yourself projects.



Help us welcome Chief Electrical Engineer Chris Gallaway and his family to Nobles Cooperative Electric.

Are you exempt from sales tax?

If you use electricity for agricultural or industrial purposes, this reminder will interest you. Electricity used in this manner may be exempt from sales tax.

To obtain relief from state sales tax, file for an exemption with our office. Contact the cooperative or drop in to complete a ST-4 form.

Deadline draws near for Round Up applications

The Operation Round Up September 2 deadline is quickly approaching. Apply now for Operation Round Up funds.

Interested organizations may call the cooperative at 507-372-7331, e-mail nce@noblesce.com or visit our website at www.noblesce.coop for an application.

Operation Round Up is made possible through the generosity of our members. Since 2001, the program has distributed over \$130,000 to local non-profit organizations. We would like to thank each of you for your caring spirit.

For those of you who are not participating in the program, we encourage you to do so. You'll discover how many lives you can touch.

Cut down on home energy costs

Say goodbye to that spare, working fridge or freezer in your home. You'll cut down on your home energy costs and earn a \$35 reward by recycling your old appliance. Call 1-877-838-1139 or visit mn-brighterideas.com to schedule your free pickup through August 31. Don't forget to enter your chance to win our \$500 energy credit sweepstakes too.


Farmfest FREE CFL Coupon

The power to make a difference is in your hands

Nobles Cooperative Electric, along with other electric cooperatives, will participate in Farmfest 2010. Bring this coupon to Farmfest (Booth #2301 in the Ag Tent) on August 3-5 and we will give you a FREE CFL. All we ask is that you install it.



Nobles Cooperative Electric

® Your Touchstone Energy® Cooperative 





Youth Tour captures the attention of Minnesota teen

While most teens are enjoying the summer at home, LeAnna Homandberg (second row from left in white) recently returned from Washington, D.C. LeAnna, the daughter of Mike and Esther, Slayton, was selected as the 2010 Youth Tour winner. She expressed her gratitude for the opportunity to participate in this year's tour and spoke fondly of her experiences. It was a trip she will never forget!

"The highlight of the trip for me was Toby's Dinner Theatre. The food, acting and singing were all absolutely fantastic."

The Youth Tour offers students a once in a lifetime experience. Students get a first-hand look at the electric industry, learn about legislative and governmental processes and get the opportunity to visit our nation's capitol. For LeAnna the experience taught her "to have fun with whom ever you are with, wherever you are and make the most of these experiences. This tour also taught me the value of good interview and essay writing skills which proved very helpful on this trip. This is a great opportunity everyone should experience!"

Country Cupboard Sticky Rolls

1 pkg. Rhodes frozen dinner rolls
3/4 c. brown sugar
4 T. water

1 pkg. regular (not instant) vanilla pudding
1 1/2 sticks oleo, melted

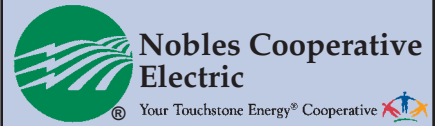
Grease a 9x13" pan. Place 20 rolls in pan. Sprinkle with pudding and brown sugar. Pour melted oleo over the top. Put the water on bottom of pan. Let rise; cover with damp towel. Let rise overnight.

Bake at 350 degrees for 20 minutes. Flip out onto cookie sheet.

Half the recipe also works for a 9x9" pan.

Send your favorite **recipe with tomato** to Nobles Cooperative Electric, ATTN: Tracey, P.O. Box 788, Worthington, MN 56187-0788. Entries must include your name, address, telephone number and NCE's location number. All entries must be received by August 16. The winning recipe will be featured in the next edition of *Current Matters* and the winner will receive a **\$10 credit** on their electric bill.

Vonnie Rutgers
Brewster



Official monthly publication

Main office

22636 U.S. Hwy. 59, P.O. Box 788
Worthington, MN 56187-0788
Phone: 507-372-7331
Fax: 507-372-5148

Satellite office

1505 20th Street, P.O. Box 56
Slayton, MN 56172-0056
Phone: 507-836-6107

Website

www.noblesce.coop

E-mail address

nce@noblesce.com

Office hours

8:00 a.m. to 4:30 p.m.
Monday through Friday

24-Hour outage service

800-776-0517

Gopher State One-Call

800-252-1166 or 811

WildBlue tech support

888-326-4289

Electrical inspectors

Murray County
Randal Maha - 507-274-5261
Nobles County
Scott Preuss - 507-449-8870

General Manager

Richard G. Burud

Board of Directors

Ronald Schwartau, President - 734-3052
Richard Greve, V. President - 376-5026
Lee York, Sec./Treas. - 879-3497
David Clarke, Director - 425-2646
Henry Hanson, Director - 483-2417
Dick Ruitter, Director - 443-5891
Gary Sieve, Director - 926-5455